



## TRAFFIC ALERT

### WICHITA FALLS DISTRICT

Adèle Lewis  
(940) 720-7728  
[Adele.Lewis@TxDOT.Gov](mailto:Adele.Lewis@TxDOT.Gov)  
Facebook: [TxDOTWichitaFalls](https://www.facebook.com/TxDOTWichitaFalls)  
Twitter: [@I35Travel](https://twitter.com/I35Travel)  
[www.My35.Org](http://www.My35.Org)

## I-35 TRAFFIC ALERT- DATE CHANGES

*Rain Delays Dates for Frontage Road Conversions*

---

**DATE: August 2, 2021**

**GAINESVILLE** — Weekend rain has resulted in a delay for the I-35 frontage conversions to One-Way operations. The changes will now start Wednesday night, August 4<sup>th</sup> and continue through Saturday afternoon, August 7<sup>th</sup>.

Each night crews will be switching frontage roads to one-way permanently. Next week's changes include:

- 8/4 - the frontage roads between Elm Fork and FM 1306 will be switched.
- 8/4 - U-turn under the Elm Fork bridges will be closed.
- 8/5 - the frontage roads between FM 1306 and Spring Creek Rd will be switched.
- 8/6 - the frontage roads between Spring Creek Rd and Hockley Creek Rd overpass will be switched.

Behind the frontage road conversions will be more barrier installations. Orange cones at the above locations will be replaced with concrete barrier starting the night of Thursday, August 5<sup>th</sup>. Barrier will be installed until finished on subsequent nights. Placing barrier is a slow process and will take until approximately August 17<sup>th</sup> to complete.

TxDOT began switching two-way frontage roads to one-way in the Cooke County in 2012 and 2016. Next week's conversions will continue the standardization effort.

Some construction will be postponed if poor weather conditions move into the area.

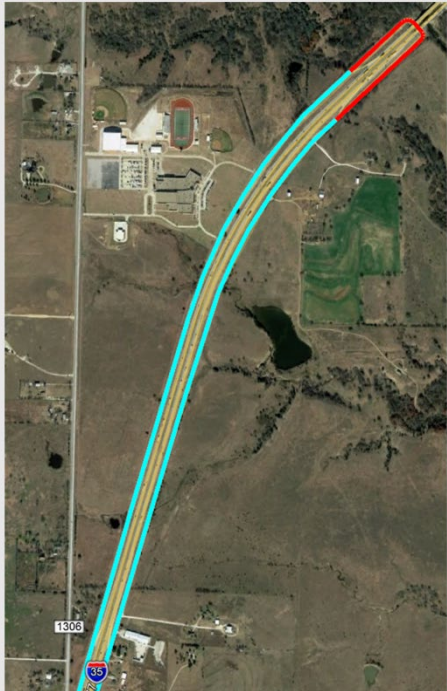
Find the closure information at [DriveTexas.Org](http://DriveTexas.Org) .

Phase drawings are included on page 2.

(MORE)

### 1st Phase

Wednesday night (8/4) into Thursday morning (8/5) the turnaround under the Elm Fork bridges will be closed. The frontage roads on both sides between Elm Fork and FM 1306 will be switched by restriping and placing barrels.



### 2nd Phase

Thursday night (8/5) into Friday morning (8/6) the frontage roads on both sides between FM 1306 and Spring Creek Road will be switched by restriping and placing barrels.



### 3rd Phase

Friday night (8/6) into Saturday afternoon (8/7) the frontage roads on both sides between Spring Creek Road and Hockley Creek overpass will be switched by restriping and placing barrels.



### 4th Phase

The Contractor will begin to replace the orange plastic barrels with low profile concrete barrier starting Thursday night (8/5) at Elm Fork. They will follow the same order of the first three phases but this process is slower and therefore will take approximately 12 days to complete all the way to the Hockley Creek overpass.

**(END)**

**MEDIA:** For more information, contact [Adele.Lewis@txdot.gov](mailto:Adele.Lewis@txdot.gov) or (940) 720-7728.

The Texas Department of Transportation is responsible for maintaining 80,000 miles of road and for supporting aviation, maritime, rail and public transportation across the state.

Connecting You with Texas  
[www.txdot.gov](http://www.txdot.gov) | [TxDOT on Facebook](#) | [TxDOT on Twitter](#)